

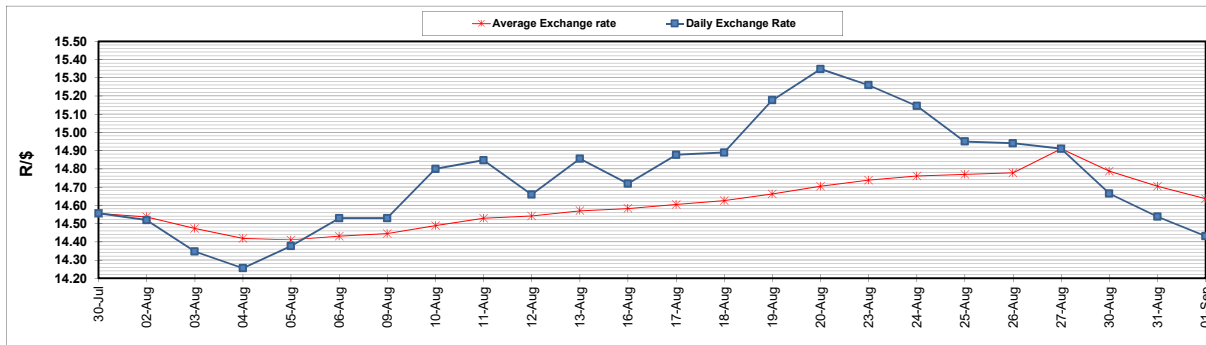
	PETROL 95 ULP	PETROL 93 ULP & LRP	DIESEL 0.05%	DIESEL 0.005%	ILL. PAR.
GAUTENG PUMP PRICE (SA c/l) AS FROM 01/09/2021	1,834.000	1,815.000	-	-	-
WHOLESALE PRICE (SA c/l) AS FROM 01/09/2021	-	-	1,548.980	1,552.380	948.488
SINGLE NATIONAL MAXIMUM RETAIL PRICE	-	-	-	-	1,197.000
BASIC FUEL PRICE - 01/09/2021 (SA c/l)	780.744	767.508	736.209	739.205	727.603
PRESS RELEASE CONTRIBUTION TO BFP 01/09/2021 - 01/09/2021 (SA c/l)	817.110	808.110	746.630	750.030	735.128
UNIT OVER/(UNDER) RECOVERY - 01/09/2021 (SA c/l)	36.366	40.602	10.421	10.825	7.525
AVERAGE BASIC FUEL PRICE 27/08/2021 - 01/09/2021	795.905	783.378	742.829	745.393	739.174
AVERAGE UNIT OVER/(UNDER) RECOVERY 27/08/2021 - 01/09/2021	29.066	32.592	21.802	21.888	7.205

### ANALYSIS MOVEMENT OF AVERAGE OVER/(UNDER) RECOVERY

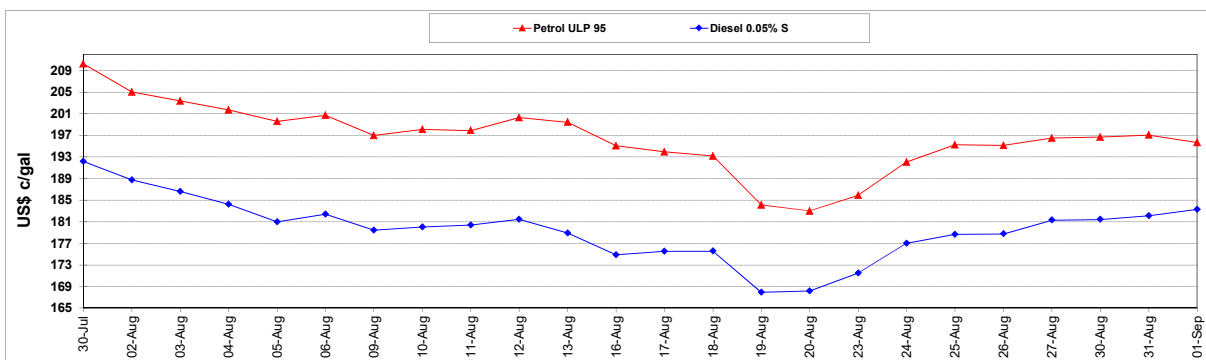
	PETROL 95	PETROL 93	DIESEL 0.05%	DIESEL 0.005%	ILL. PAR.
- MOVEMENT IN INTERNATIONAL PRODUCT PRICES	21.289	24.938	14.543	14.604	(0.018)
- MOVEMENT IN EXCHANGE RATE	7.776	7.654	7.258	7.283	7.222
AVERAGE UNIT OVER/(UNDER) RECOVERY 27/08/2021 - 01/09/2021	29.066	32.592	21.802	21.888	7.205

### R/\$ EXCHANGE RATE - (R/\$14.4315- 01/09/2021)

#### EXCHANGE RATE USED IN BASIC FUEL PRICE



#### INTERNATIONAL PRODUCT PRICES OF BASKET USED IN BASIC FUEL PRICE



#### BASIC FUEL PRICE IN SA CENTS PER LITRE

